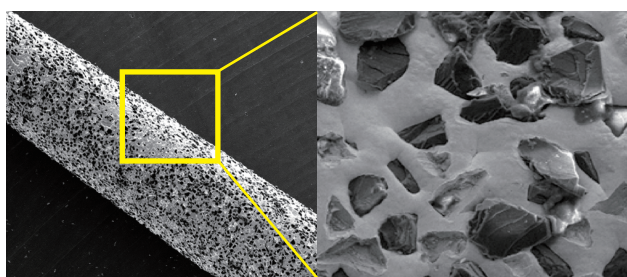
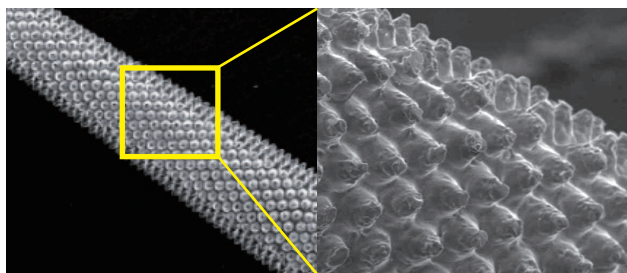


Endodontic Ultrasonic Tip with Micro-projection

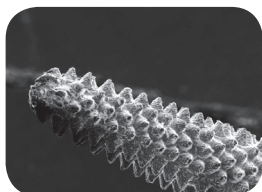
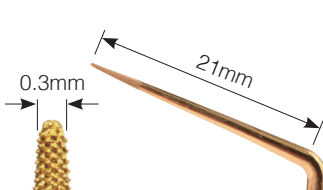
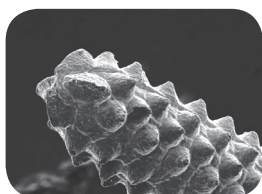
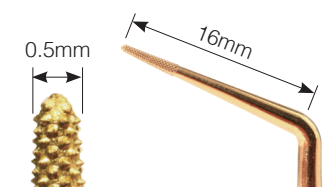
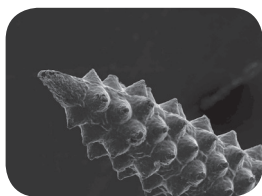
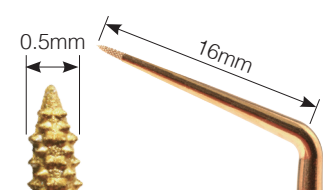
BL TIP



Diamond coated Tip



BL TIP with Micro-projections



B&L non-surgical ultrasonic tip

Longevity and safety with micro-projections

BL Tips have sharp abrasive micro-projections integrated onto the main body of the tip.

Unlike conventional diamond coated endodontic tips, whose coating wears off during surgery, BL Tips are more resilient and efficient in cutting

Manageable elimination with a variety of shapes and sizes

The ends of the BL Tips come in a variety of shapes and sizes, making it convenient for the doctor to effectively control the amount of dentin removal.

100µm Micro-projections : ideal for removing larger quantities of dentin.

50µm Micro-projections : ideal for more precision-based refinement.

Versatility

BL Tips are useful not only in accessing the root canal, but also in enlarging the coronal aspect of the root canal because the end of the tip works in every direction.

Item Code

Starter Kit : BLSKA(BL1,3,5 Satelec), BLSKE(BL1,3,5 EMS)

BL-1 : BL1A, BL1E

BL-3 : BL3A, BL3E

BL-5 : BL5A, BL5E

Appropriate power level

BL-1		BL-3		BL-5	
SATELEC®	20% - 30%			Under 20%	
EMS®	10% - 20%			Under 10%	

E-Type not available for sale in the US.

BL-1 (100µm Micro-projections)

Removal of pulp stone, calcified dentin
Location of the MB2 canal and hidden canals
Removal of gutta percha and paste materials

BL-3 (100µm Micro-projections)

Use at a higher power, higher speed
Removal of secondary dentin and pulp stones
Resistance to breakage

BL-5 (50µm Micro-projections)

Smaller & longer than BL-1
Sharper and longer shape allows efficient preparation of the coronal half of the canal and creates a space for the insertion of a file.